

AMBERGRIS CAYE

Ambergris Caye's primary town, San Pedro, is a colourful Caribbean village full of open-air restaurants, barefoot beach bars, dive piers, souvenir shops, and a variety of unique boutiques. On average, about 25,000 people live on Ambergris Caye, with a fluctuation between high and low season.

Ambergris Caye, the largest of the atolls and cayes, takes in approximately 67% of all tourism revenue generated by the country of Belize. This is primarily due to the colorful and vibrant reef directly paralleling the island, the large variety of restaurants and activities, and the relaxing and welcoming Caribbean vibe.





MARRIOTT RESIDENCES
BELIZE AMBERGRIS CAYE



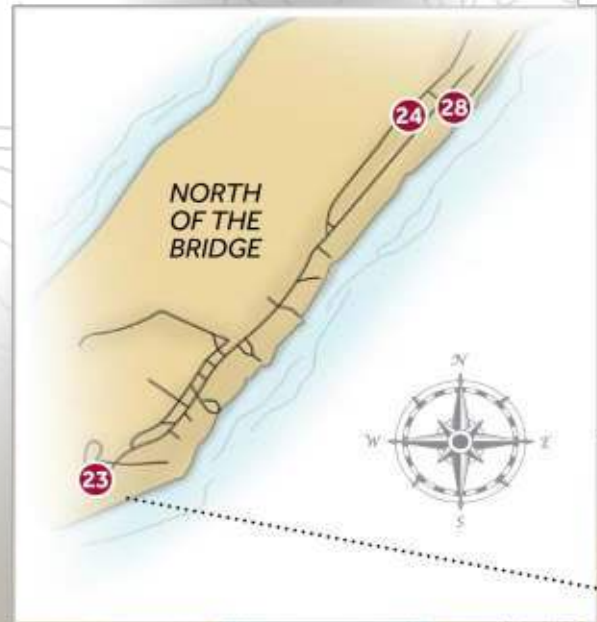
OUR LOCATION



MARRIOTT RESIDENCES
BELIZE AMBERGRIS CAYE

MAP OF AMBERGRIS
SAN PEDRO
TOWN AREA

1. THE BAKER
2. SUPER BUY SOUTH
3. GAS STATION
4. ESPERANZA'S FRUIT STAND
5. ISLAND ACADEMY
6. BEVERAGE DISTRIBUTOR
7. ISLAND CITY MARKET
8. WINE DE VINE
9. SAN PEDRO AIRPORT
10. CUSTOMS & IMMIGRATION OFFICE
11. BELIZE CHOCOLATE COMPANY
12. BLUE WATER GRILL
13. WILD MANGO'S
14. CENTRAL PARK (& ALBERTINA'S FOOD STAND)
15. ELVI'S KITCHEN
16. ROAD KILL BAR
17. PALAPA BAR
18. SANDBAR
19. MELT CAFÉ
20. SAN PEDRO HIGH SCHOOL
21. ROUND HIGH SCHOOL
22. BOCA DEL RIO BRIDGE
23. PARADISE THEATER
24. TRUCK STOP
25. SUPER BUY NORTH
26. OCEAN FERRY BELIZE
27. HIDDEN TREASURE RESTAURANT
28. RAIN RESTAURANT
29. WARUGUMA
30. CAPTAIN SHARKS
31. PARADICE CREAM
32. EL FOGÓN
33. GRANIELS DREAMLAND



BELIZE
MARRIOTT® RESIDENCES
AMBERGRIS CAYE

FERRY ROUTE



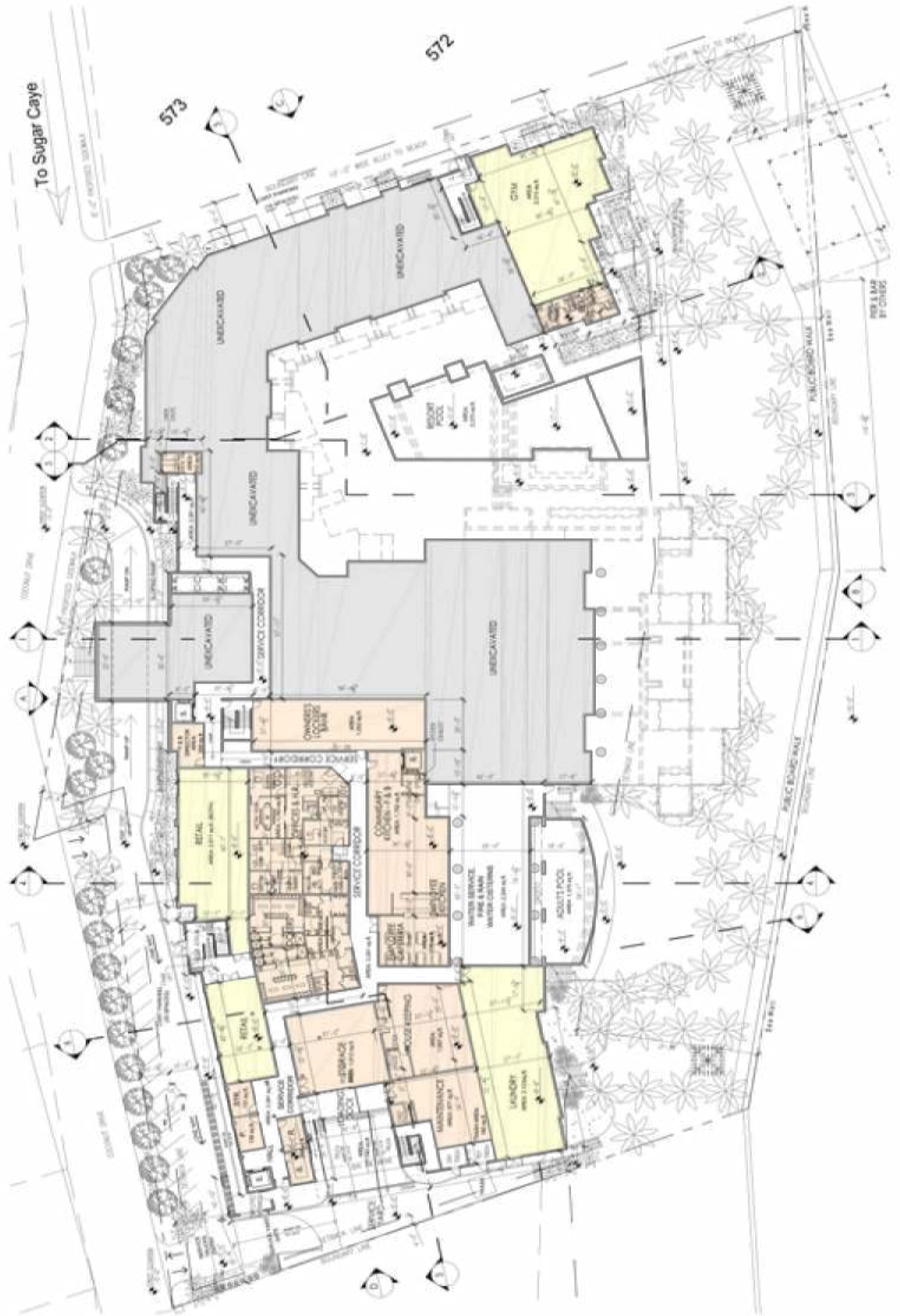
*ALL RENDERINGS ARE SUBJECT TO CHANGE.



**ALL RENDERINGS ARE SUBJECT TO CHANGE.*



MARRIOTT RESIDENCES
BELIZE AMBERGRIS CAYE

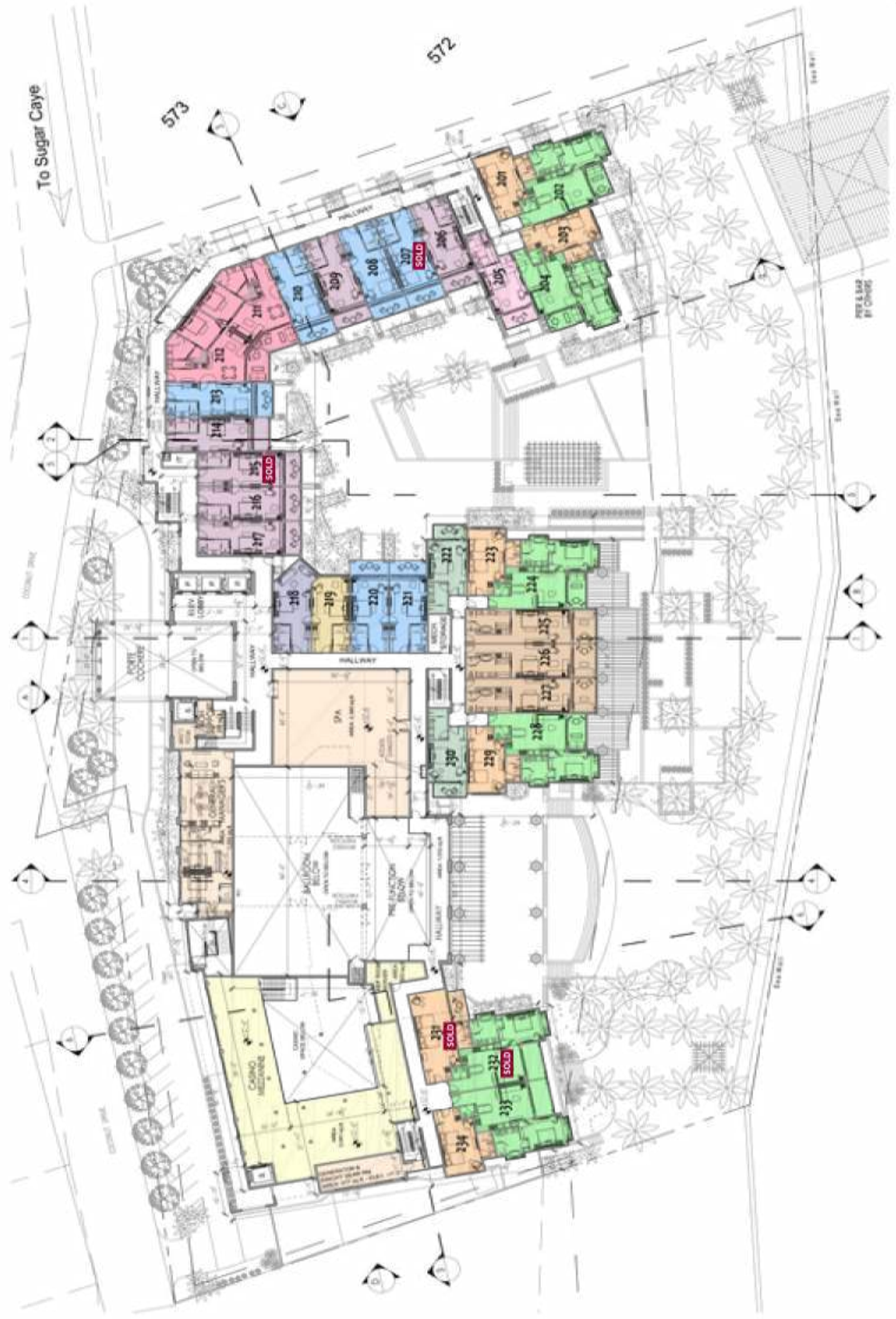


CARIBBEAN SEA

BASEMENT LEVEL FLOOR PLAN



MARRIOTT RESIDENCES
BELIZE AMBERGRIS CAYE



CARIBBEAN SEA

SECOND LEVEL FLOOR PLAN



CARIBBEAN SEA



THIRD LEVEL FLOOR PLAN



MARRIOTT RESIDENCES
BELIZE AMBERGRIS CAYE



CARIBBEAN SEA

FOURTH LEVEL FLOOR PLAN

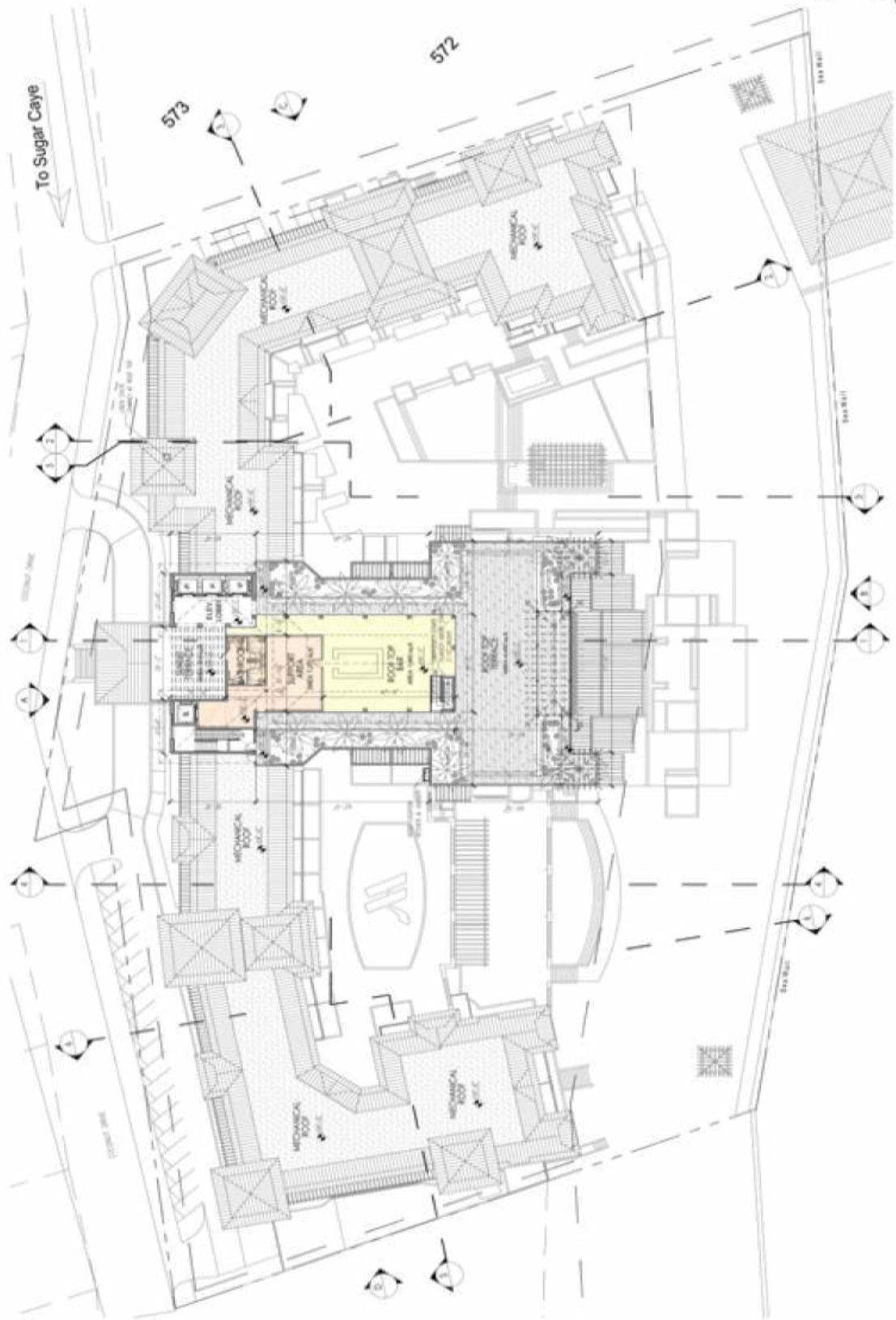


CARIBBEAN SEA

FIFTH LEVEL FLOOR PLAN



MARRIOTT RESIDENCES
BELIZE AMBERGRIS CAYE



ROOF TOP FLOOR PLAN

GROUND FLOOR

CONDO	TYPE	PRICE	HOA/MTLY	AVAILABILITY
101	DUKE	\$339,900*	\$291.20	
102	QUEEN	\$699,900*	\$607.22	
103	DUKE	\$339,900*	\$291.20	
104	QUEEN	\$699,900*	\$607.22	
105	EMPRESS	\$369,900*	\$338.78	
106	PRINCESS #1	\$409,900*	\$354.88	
107	PRINCESS #2	\$419,900*	\$365.42	
108	PRINCESS #2	\$419,900*	\$365.42	
109	PRINCESS #1	\$409,900*	\$354.88	
110	PRINCESS #2	\$419,900*	\$365.42	
111	PRINCE	\$649,900*	\$567.46	SOLD
112	PRINCE	\$649,900*	\$567.46	
113	PRINCESS #2	\$419,900*	\$365.42	
114	PRINCESS #1	\$409,900*	\$354.88	
115	PRINCESS #1	\$409,900*	\$354.88	
116	PRINCESS #1	\$409,900*	\$354.88	SOLD

COURTYARD

STUDIO - 434 FT²

DUKE

STUDIO - 420 FT²

EMPRESS/EMPEROR/DUCHESS

STUDIO - 498/456/490 FT²

PRINCESS #1/#2/#3

STUDIO - 524/541/558 FT²

CROWN

STUDIO - 664 FT²

QUEEN/ PRINCE

1 BEDROOM - 882/826 FT²

KING (DUKE + QUEEN)

2 BEDROOM - 1344 FT²

WINDSOR

(QUEEN + DUKE + EMPRESS)
3 BEDROOM - 1878/1869/1883 FT²

ROYAL

PENTHOUSE SUITE

SECOND FLOOR

CONDO	TYPE	PRICE	HOA/MTLY	AVAILABILITY
201	DUKE	\$339,900*	\$291.20	
202	QUEEN	\$699,900*	\$607.22	
203	DUKE	\$339,900*	\$291.20	
204	QUEEN	\$699,900*	\$607.22	
205	EMPRESS	\$369,900*	\$338.78	
206	PRINCESS #1	\$409,900*	\$354.88	
207	PRINCESS #2	\$419,900*	\$365.42	SOLD
208	PRINCESS #2	\$419,900*	\$365.42	
209	PRINCESS #1	\$409,900*	\$354.88	
210	PRINCESS #2	\$419,900*	\$365.42	
211	PRINCE	\$649,900*	\$567.46	
212	PRINCE	\$649,900*	\$567.46	
213	PRINCESS #2	\$419,900*	\$365.42	
214	PRINCESS #1	\$409,900*	\$354.88	
215	PRINCESS #1	\$409,900*	\$354.88	SOLD
216	PRINCESS #1	\$409,900*	\$354.88	
217	PRINCESS #1	\$409,900*	\$354.88	
218	DUCHESS	\$369,900*	\$333.90	
219	COURTYARD	\$319,900*	\$299.74	
220	PRINCESS #1	\$409,900*	\$354.88	
221	PRINCESS #1	\$409,900*	\$354.88	
222/223/224	WINDSOR	\$1,499,900*	\$1,245.72	

SECOND FLOOR CONTINUED ...

CONDO	TYPE	PRICE	HOA/MTLY	AVAILABILITY
225	CROWN	\$529,900*	\$450.00	
226	CROWN	\$529,900*	\$450.00	
227	CROWN	\$529,900*	\$450.00	
228	QUEEN	\$699,900*	\$607.22	
229	DUKE	\$339,900*	\$291.20	
230	EMPEROR	\$359,900*	\$313.16	
231	DUKE	\$339,900*	\$291.20	SOLD
232	QUEEN	\$699,900*	\$607.22	SOLD
233	QUEEN	\$699,900*	\$607.22	
234	DUKE	\$339,900*	\$291.20	

THIRD FLOOR

CONDO	TYPE	PRICE	HOA/MTLY	AVAILABILITY
301	DUKE	\$339,900*	\$294.02	
302	QUEEN	\$699,900*	\$616.36	
303	DUKE	\$339,900*	\$294.02	
304	QUEEN	\$699,900*	\$616.36	SOLD
305	EMPRESS	\$369,900*	\$342.56	
306	PRINCESS #1	\$409,900*	\$358.98	
307	PRINCESS #2	\$419,900*	\$369.73	
308	PRINCESS #2	\$419,900*	\$369.73	
309	PRINCESS #1	\$409,900*	\$358.98	
310	PRINCESS #2	\$419,900*	\$369.73	
311	PRINCE	\$649,900*	\$575.81	
312	PRINCE	\$649,900*	\$575.81	
313	PRINCESS #2	\$419,900*	\$369.73	
314	PRINCESS #1	\$409,900*	\$358.98	
315	PRINCESS #1	\$409,900*	\$358.98	
316	PRINCESS #1	\$409,900*	\$358.98	
317	PRINCESS #1	\$409,900*	\$358.98	
318	DUCHESS	\$369,900*	\$337.58	
319	COURTYARD	\$319,900*	\$302.73	
320	PRINCESS #1	\$409,900*	\$358.98	
321	PRINCESS #1	\$409,900*	\$358.98	
322	EMPEROR	\$359,900*	\$316.42	
323/324	KING	\$999,900*	\$919.07	
325	CROWN	\$529,900*	\$456.00	
326	CROWN	\$529,900*	\$456.00	SOLD
327	CROWN	\$529,900*	\$456.00	
328/329/330	WINDSOR	\$1,499,900*	\$1,257.27	SOLD
331	PRINCESS #1	\$409,900*	\$358.98	
332	PRINCESS #1	\$409,900*	\$358.98	

THIRD FLOOR CONTINUED ...

CONDO	TYPE	PRICE	HOA/MTLY	AVAILABILITY
333	COURTYARD	\$319,900*	\$302.73	
334	DUCHESS	\$369,900*	\$337.58	
335	PRINCESS #1	\$409,900*	\$358.98	
336	PRINCESS #1	\$409,900*	\$358.98	
337	PRINCESS #1	\$409,900*	\$358.98	
338	PRINCESS #1	\$409,900*	\$358.98	
339	PRINCESS #3	\$429,900*	\$380.48	
340	PRINCESS #3	\$429,900*	\$380.48	
341	PRINCESS #1	\$409,900*	\$358.98	
342	PRINCESS #1	\$409,900*	\$358.98	
343	COURTYARD	\$319,900*	\$302.73	
344	DUCHESS	\$369,900*	\$337.58	
345	DUCHESS	\$369,900*	\$337.58	
346	COURTYARD	\$319,900*	\$302.73	
347	EMPRESS	\$369,900*	\$342.56	
348	DUKE	\$339,900*	\$294.02	
349	QUEEN	\$699,900*	\$616.36	
350	QUEEN	\$699,900*	\$616.36	
351	DUKE	\$339,900*	\$294.02	

FOURTH FLOOR

CONDO	TYPE	PRICE	HOA/MTLY	AVAILABILITY
401	DUKE	\$349,900*	\$296.85	
402	QUEEN	\$719,900*	\$625.51	
403	DUKE	\$349,900*	\$296.85	
404	QUEEN	\$719,900*	\$625.51	
405	EMPRESS	\$379,900*	\$346.33	
406	PRINCESS #1	\$419,900*	\$363.08	
407	PRINCESS #2	\$429,900*	\$374.04	
408	PRINCESS #2	\$429,900*	\$374.04	
409	PRINCESS #1	\$419,900*	\$363.08	
410	PRINCESS #2	\$429,900*	\$374.04	
411	PRINCE	\$669,900*	\$584.16	
412	PRINCE	\$669,900*	\$584.16	
413	PRINCESS #2	\$429,900*	\$374.04	
414	PRINCESS #1	\$419,900*	\$363.08	
415	PRINCESS #1	\$419,900*	\$363.08	
416	PRINCESS #1	\$419,900*	\$363.08	
417	PRINCESS #1	\$419,900*	\$363.08	
418	DUCHESS	\$379,900*	\$341.26	
419	COURTYARD	\$329,900*	\$305.73	

COURTYARD

STUDIO - 434 FT²

DUKE

STUDIO - 420 FT²

EMPRESS/EMPEROR/DUCHESS

STUDIO - 498/456/490 FT²

PRINCESS #1/#2/#3

STUDIO - 524/541/558 FT²

CROWN

STUDIO - 664 FT²

QUEEN/ PRINCE

1 BEDROOM - 882/826 FT²

KING (DUKE + QUEEN)

2 BEDROOM - 1344 FT²

WINDSOR

(QUEEN + DUKE + EMPRESS)

3 BEDROOM - 1878/1869/1883 FT²

ROYAL

PENTHOUSE SUITE

FOURTH FLOOR CONTINUED ...

CONDO	TYPE	PRICE	HOA/MTLY	AVAILABILITY
420	PRINCESS #1	\$419,900*	\$363.08	
421	PRINCESS #1	\$419,900*	\$363.08	
422	EMPEROR	\$369,900*	\$319.69	
423	DUKE	\$349,900*	\$296.85	
424	QUEEN	\$719,900*	\$625.51	
425	CROWN	\$544,900*	\$462.00	
426	CROWN	\$544,900*	\$462.00	
427	CROWN	\$544,900*	\$462.00	SOLD
428	QUEEN	\$719,900*	\$625.51	SOLD
429	DUKE	\$349,900*	\$296.85	SOLD
430	EMPEROR	\$369,900*	\$319.69	
431	PRINCESS #1	\$419,900*	\$363.08	
432	PRINCESS #1	\$419,900*	\$363.08	
433	COURTYARD	\$329,900*	\$305.73	
434	DUCHESS	\$379,900*	\$341.26	
435	PRINCESS #1	\$419,900*	\$363.08	
436	PRINCESS #1	\$419,900*	\$363.08	
437	PRINCESS #1	\$419,900*	\$363.08	
438	PRINCESS #1	\$419,900*	\$363.08	
439	PRINCESS #3	\$439,900*	\$385.00	
440	PRINCESS #3	\$439,900*	\$385.00	
441	PRINCESS #1	\$419,900*	\$363.08	
442	PRINCESS #1	\$419,900*	\$363.08	
443	COURTYARD	\$329,900*	\$305.73	
444	DUCHESS	\$379,900*	\$341.26	
445	DUCHESS	\$379,900*	\$341.26	
446	COURTYARD	\$329,900*	\$305.73	SOLD
447	PRINCESS #1	\$419,900*	\$363.08	
448	DUKE	\$349,900*	\$296.85	
449	QUEEN	\$719,900*	\$625.51	
450	QUEEN	\$719,900*	\$625.51	
451	DUKE	\$349,900*	\$296.85	

FIFTH FLOOR

CONDO	TYPE	PRICE	HOA/MTLY	AVAILABILITY
501	DUKE	\$356,900*	\$298.26	SOLD
502	QUEEN	\$733,900*	\$630.08	SOLD
503	DUKE	\$356,900*	\$298.26	SOLD
504	QUEEN	\$733,900*	\$630.08	SOLD
505	EMPRESS	\$389,900*	\$348.22	SOLD
506	PRINCESS #1	\$429,900*	\$365.12	

FIFTH FLOOR CONTINUED ...

CONDO	TYPE	PRICE	HOA/MTLY	AVAILABILITY
507	PRINCESS #2	\$439,900 *	\$376.19	
508	PRINCESS #2	\$439,900 *	\$376.19	SOLD
509	PRINCESS #1	\$429,900 *	\$365.12	
510	PRINCESS #2	\$439,900 *	\$376.19	
511	PRINCE	\$679,900 *	\$588.33	
512	PRINCE	\$679,900 *	\$588.33	
513	PRINCESS #2	\$439,900 *	\$376.19	
514	PRINCESS #1	\$429,900 *	\$365.12	
515	PRINCESS #1	\$429,900 *	\$365.12	
516	PRINCESS #1	\$429,900 *	\$365.12	
517	PRINCESS #1	\$429,900 *	\$365.12	
518	DUCHESS	\$389,900 *	\$343.10	
519	COURTYARD	\$334,900 *	\$307.23	
520	PRINCESS #1	\$429,900 *	\$365.12	
521	PRINCESS #1	\$429,900 *	\$365.12	
522/523/524	WINDSOR	\$1,574,900 *	\$1,281.03	SOLD
525	CROWN	\$554,900 *	\$465.00	SOLD
526	CROWN	\$554,900 *	\$465.00	
527/528/529/530	ROYAL	ASK FOR DETAILS		
531	PRINCESS #1	\$429,900 *	\$365.12	
532	PRINCESS #1	\$429,900 *	\$365.12	
533	COURTYARD	\$344,900 *	\$307.23	
534	DUCHESS	\$389,900 *	\$343.10	
535	PRINCESS #1	\$429,900 *	\$365.12	
536	PRINCESS #1	\$429,900 *	\$365.12	
537	PRINCESS #1	\$429,900 *	\$365.12	
538	PRINCESS #1	\$429,900 *	\$365.12	
539	PRINCESS #3	\$449,900 *	\$387.26	
540	PRINCESS #3	\$449,900 *	\$387.26	
541	PRINCESS #1	\$429,900 *	\$365.12	
542	PRINCESS #1	\$429,900 *	\$365.12	
543	COURTYARD	\$344,900 *	\$307.23	
544	DUCHESS	\$389,900 *	\$343.10	
545	DUCHESS	\$389,900 *	\$343.10	
546	COURTYARD	\$344,900 *	\$307.23	
547	EMPRESS	\$389,900 *	\$348.22	
548/549	KING	\$1,049,900 *	\$937.29	
550	QUEEN	\$733,900 *	\$630.08	
551	DUKE	\$356,900 *	\$298.26	

COURTYARD
STUDIO - 434 FT²

DUKE
STUDIO - 420 FT²

EMPRESS/EMPEROR/DUCHESS
STUDIO - 498/456/490 FT²

PRINCESS #1/#2/#3
STUDIO - 524/541/558 FT²

CROWN
STUDIO - 664 FT²

QUEEN/ PRINCE
1 BEDROOM - 882/826 FT²

KING (DUKE + QUEEN)
2 BEDROOM - 1344 FT²

WINDSOR
(QUEEN + DUKE + EMPRESS)
3 BEDROOM - 1878/1869/1883 FT²

ROYAL
PENTHOUSE SUITE